

# **Summary of Seahorse Population and Distribution**

**Koh Rong Samloem  
Preah Sihanouk, Cambodia**



## **Report of Seahorse Demographics and Habitats**

**Marine Conservation Cambodia  
4<sup>th</sup> Quarter Report 2013 – Oct/Nov/Dec**

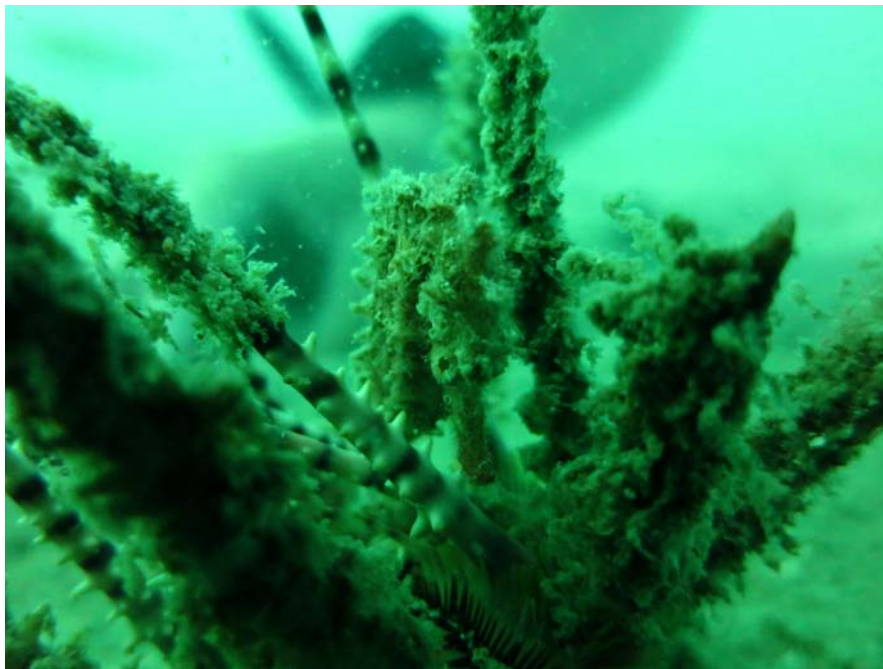


Photo 1 – *H. spinosissimus* on the Corral, MCC 2013



Report by:

**Daniel Grainger** – Marine Research Team, MCC

**Paul Ferber** – Managing Director and Project Founder, MCC

**Emma Robertson** – Conservation Co-Ordinator

**Mark Saunders** – Marine Research Team

## Abstract

In June 2011, MCC began an initial set of surveys to assess and monitor the changing conditions of the seahorse population and habitat in the study site, 'The Corral', located off the East coast of Koh Rong Samloem.

These surveys recommenced in August 2012 and have continued since then until the present. This report covers the fourth quarter of 2013 (October, November and December). In this quarter, 41 seahorses were recorded over 91 surveys, all of which were either *Hippocampus spinosissimus* adults or juvenile specimens. Site information regarding habitat, holdfast selection, depth, and temperature were also collected on each survey and compiled with all previously recorded data. Data from this quarter continued to support previous hypotheses which stated that; *H. spinosissimus* seem to be more suited to the disturbed habitat than other seahorse species previously observed in the study area, the seahorse population on The Corral appears to have adapted to the use of mobile holdfasts, and there currently appears to be no strong patterns in sexual demographics ratios throughout the observation sets.

The ongoing nature of this study means that with each quarter of data collected and analysed, comes a better understanding of this local seahorse population in terms of; their behaviour, migratory patterns, breeding patterns, depth range, and the habitat they reside in.

It is hoped that through continuous research, a database of the conditions of this study area can be compiled in order to help protect and conserve this fragile and important ecosystem. By establishing relationships between species composition and diversity, depth, preferred holdfasts and holdfast densities, habitat cover, sexual demographics and reproductive activity, a more effective conservation strategy can be designed and implemented.

All of this will lead to a better understanding for the long term protection of this fragile species and sensitive habitat.

Marine Conservation Cambodia

Koh Rong Samloem Village, Koh Rong Samloem

Mittapheap District, Sihanoukville

Cambodia

Info@marineconservationcambodia.org

Kep City

Kep Province

Cambodia

## Acknowledgements

Marine Conservation Cambodia (MCC) has been working on conservation and community livelihoods in collaboration with the Royal Government of Cambodia Fisheries Administration (RGC FiA), local authorities and local communities since 2008.

The Marine Monitoring and Marine Research programs around Koh Rong and Koh Rong Samloem are now well underway and are currently undertaking marine surveys around Koh Rong Samloem, this is to monitor the Seahorse populations and the coral reefs, so it is possible to assist the FiA in the creation of Marine Fisheries Management Areas (MFMA's), Cambodia's equivalent to Marine Protected Areas (MPAs).

Close collaboration with the FiA and international institutions such as the FAO Regional Fisheries Livelihoods Programme (RFLP), The Seahorse Trust (UK), Save Our Seahorses (Ireland) has proven that MCC is now a respected and credited leader in conservation and community work in Cambodia.

## Special Thanks

<b>H. E. Dr. Nao Thuok</b>	Director General of the Fisheries Administration
<b>Mr Ing Try</b>	Deputy Director of the Fisheries Administration
<b>Mr Ouk Vibol</b>	Director of Fisheries Conservation Division
<b>Mr Doung Samth</b>	Chief of Sihanoukville Fisheries Cantonment

## Research Team

<b>Paul Ferber</b>	Managing Director and Project Founder, MCC
<b>Emma Robertson</b>	B.EnvSc (MarineSc) – Conservation Co-ordinator
<b>Daniel Granger</b>	B.Sc (Ecology) – Marine Research Team, MCC
<b>Chin-yan Jane Wong</b>	B.Sc (Ecology) – Marine Research Team, MCC
<b>Mark Saunders</b>	

## TABLE OF CONTENTS

Abstract	3
Acknowledgements	4
Special Thanks	4
Research Team	4
Research Partners and Advisers	4
Introduction	6
Study Area	8
Methodology	10
Results	12
Discussion	15
Conclusion	19
References	21

## INTRODUCTION

There are number of anthropogenic activities that continuously threaten marine habitats and biodiversity; overexploitation, habitat destruction, introduction of invasive species and climate change (Jackson *et al.* 2001). One method with which to mitigate at least the first two of these factors is the establishment of marine protected areas (MPAs). MPAs are regions with restricted anthropogenic activity, and act as harbours for marine species to breed and recruit (Gell and Roberts 2002; Leslie 2005). In 1970, there were a global total of 118 MPAs, currently there are more than 5,045 (Kelleher and Kenchington 1992; Spalding *et al.* 2008). One of the first steps to MPA establishment is the assessment of a habitat or region in order to identify areas of important ecological value in terms of species to be protected. Furthermore, adding a species or genus of concern to the Convention on International Trade in Endangered Species (CITES) Appendix can help achieve sustainable fisheries and fishing quotas (Foster and Vincent 2004). Amongst the first marine fish added to a CITES Appendix, were all known species of seahorse (*Hippocampus spp.*).

Members of the Syngnathidae family, 48 identified species of seahorses are a genus of ecological, economic, medicinal and cultural importance (Vincent *et al.* 2011). Generally for most species, seahorses occupy shallow coastal waters (<30m depth) distributed between 50° north and 50° south (Foster and Vincent 2004), however some species, such as the Zebra Seahorse, *Hippocampus zebra*, are found as deep as 70 meters (<http://www.saveourseahorses.org/seahorses.php>). Different *Hippocampus* species tolerate a plethora of different environmental parameters, from cool, deep, open water highly saline habitats to warmer, shallow, dense seagrass freshwater estuaries and intermediary mangroves, macroalgae and corals (Tipton and Bell 1988). As they prey on bottom-dwelling organisms, seahorses help maintain trophic balance within their occupied habitats (Bologna 2007). As such, they are a lineage of important conservative value. Characteristic of many life-history specialists, seahorses exhibit strategies which may make them particularly susceptible to overexploitation and habitat destruction (Foster and Vincent 2004).

Occupying small home ranges, poor mobility, low dispersal rates, parental care and monogamous breeding habits, seahorses have relatively low levels of fecundity and thus low population recruitment rates (Foster and Vincent 2004). Such a life-history strategy coupled with high susceptibility to unsustainable fishing techniques, a persistently high trade demand, and increasing commercial value with decreasing abundance (Courchamp *et al.* 2006), seahorse populations are internationally threatened. Their sedentary nature of attaching themselves to holdfasts using a prehensile tail makes them susceptible to habitat destruction as well as population overexploitation. Wild populations are harvested using a variety of techniques, including (but not limited to) unselective trawl fishing in American and south-east Asian waters, breath-hold diving in Brazil and the Philippines and dip-netting in India (Meeuwig *et al.* 2006; Rosa *et al.* 2006; Vincent 1996). Up to 95% of seahorses in circulation for trade are by-catch from shrimp trawlers (McPherson and Vincent 2004), and Indian, Thai and Vietnamese fisheries have particularly high levels of annual seahorse by-catch (Vincent *et al.* 2011). As such, the Gulf of Thailand is an area of particular concern when evaluating seahorse population management and assessment.

Much of the information regarding seahorse harvest quantities and wild populations comes from relatively old trade surveys and interviews (Vincent 1996; Vincent *et al.* 2011). This assessment method is limited as it compiles out-dated figures which are often highly

conservative in their estimates of seahorse catch (O'Donnell 2010). Moreover, fishery authorities can provide false harvest figures as a means to persistently exploit the growing economic demand for seahorses, particularly for use in Traditional Chinese Medicine (Doyle, n.d.). Indeed, targeted efforts by individuals and organisations such as Kealan Doyle (Save our Seahorses) and The Seahorse Trust, have shown that in China alone over 150 million seahorses are consumed for use in Traditional Chinese Medicine yearly (Doyle, n.d.). This staggering figure is more than seven times the official number of specimens declared by the Chinese authorities ([awionline.org](http://awionline.org)). The fact that official numbers of harvested specimens produced by local and governmental fisheries are such an underestimate calls for a drastic re-evaluation of the ways in which seahorse harvest quantities and wild populations are determined.

One such method is to directly assess the population quality in a region by conducting population and habitat surveys. Many previous surveys of wild seahorse abundance and density have only been one-off snapshots (Rosa *et al.* 2007). Although useful for an immediate assessment of the area, such assessments provide no temporal coverage (Barrows *et al.* 2009), which is required to assess the effect of any conservative measures such as fishing quotas or MPAs on fish populations over time (Gell and Roberts 2002). The current study has been assessing seahorse populations and habitat in the same geographical area for [NUMBER] months to date.

Primarily, seahorses are an appropriate study species for conservation and management due to their status as a 'flagship' species (Shokri *et al.* 2008). Such species are considered charismatic and are capable of attracting public attention and sympathy, which can in turn potentially attract funding for protection (Caro and O'Doherty 1999). Also, Syngnathid density has previously been shown to be indicative of non-syngnathid species diversity in Australian estuarine seagrass beds (Shokri *et al.* 2008). As such, Syngnathids could potentially be used as indicators for areas to be protected by MPAs or fishing quotas, as these areas would encompass a diverse array of species and densities.

Our particular study area, 'The Corral', is unique and useful in the fact that it is segregated largely into two regions; protected and unprotected from unsustainable fishing techniques. In 2007, the entire region had high seahorse species diversity (six identified species; *H. comes*, *H. histrix*, *H. kelloggi*, *H. kuda*, *H. spinosissimus* and *H. trimaculatus*) (P. Ferber pers. obs.). Large scale trawling activity in March 2007 decimated the populations and habitat, so that currently *H. spinosissimus* is almost exclusively the only species in the region, occurring in low densities (MCC 2011). After the 2007 trawling event, a three hundred meter No Take Zone (NTZ) in the north-west section of the Corral was established which prevents any unsustainable fishing methods in this region (such as trawling, dynamite fishing and air supplied collection). Despite the unfortunate nature of the trawling, we are provided with an opportunity to monitor habitat and population recovery, rejuvenation and recruitment. With the establishment of a long-term successful volunteer based project (Marine Conservation Cambodia) close to The Corral survey area, seahorse population surveys can be conducted over a significant timespan of many years.

## STUDY AREA

Koh Rong Samloem Island is located 28 km south west of the port of Sihanoukville on Cambodia's southern coast. The island's coastline is predominately shallow, mainly composed of sand flats, seagrass beds and coral reef habitats. Previous studies have identified 5 geographically separated coastal areas of seahorse habitat, designating one particular area, The Corral site, as a location for targeted seahorse research. This is due to its large breeding populations and close proximity to Marine Conservation Cambodia (MCC) facilities.



Figure 1. Map of Southern Cambodia and islands with magnification of Koh Rong Samloem

The Corral site is located to the east of Koh Koun, a small island situated to the north of Koh Rong Samloem. The area is dominated by sand flats, which slope gradually from the east coast of Koh Koun, with depths ranging between 5-20m. The area supports populations of bivalves, soft corals, hydrozoans and large numbers of pencil urchins (*Prionacidaris spp*), which provide valuable holdfasts for seahorses.

The habitat was observed to be in excellent condition in 2007, at this time species diversity of the area was observed to be unusually high, with 6 species of seahorse identified from photographic evidence taken at the Corral site. These species are *Hippocampus spinosissimus*, *Hippocampus trimaculatus*, *Hippocampus kuda*, *Hippocampus comes*, *Hippocampus kelloggi*, *Hippocampus histrix*, (*Hippocampus barbouri* and *Hippocampus comes* are suspected but have not been photographed). Previous data demonstrates that *H. spinosissimus* heavily dominates the population.

However, recent damage from illegal trawling activity has greatly impacted the habitat, reducing the biodiversity and productivity of the local ecosystem. Field observations from 2007 suggest that since this period of time seahorse species diversity has decreased to strongly favour *H. spinosissimus*.

Legal protection of the habitat has been established in the form of a 300m No Take Zone (NTZ) extending from Koh Koun Island as well as a community conservation area. The 300m NTZ



only covers a small percentage of the study site; however the community conservation area covers far more of the area. Unfortunately protection measures are often ignored or circumvented; and thus frequent monitoring and increased patrols are necessary to prevent trawling activity in the area. Regularly conducted population assessments provide the consistent data necessary to measure the recovery or decline of this area and to make comparisons to previously observed ecosystem productivity. This data will also show the impacts, both positive and negative, of the conservation measures currently in place.

## METHODOLOGY

The population assessment was conducted through underwater visual transects conducted in the Corral study area. The starting point of each 500 transect is dependent upon a grid system whereby the entire seahorse area is divided evenly into 12 sections. Two GPS co-ordinates are chosen from one grid each day and surveyed. This means that each day they are randomly selected from a different grid, ensuring that each grid is selected at least once in the month before we start repeating grids. In order to have 30 sites surveyed per month inevitably some grids end up repeating more than others due to the fact there are only 12 grids. Directions are also randomised for the survey by choosing from eight options (i.e. N, NE, E, SE, S, SW, W, NW) for each survey point and making sure these are evenly distributed in any one grid. Choosing random directions from random grids ensures the same direction is not favoured in any particular grid.

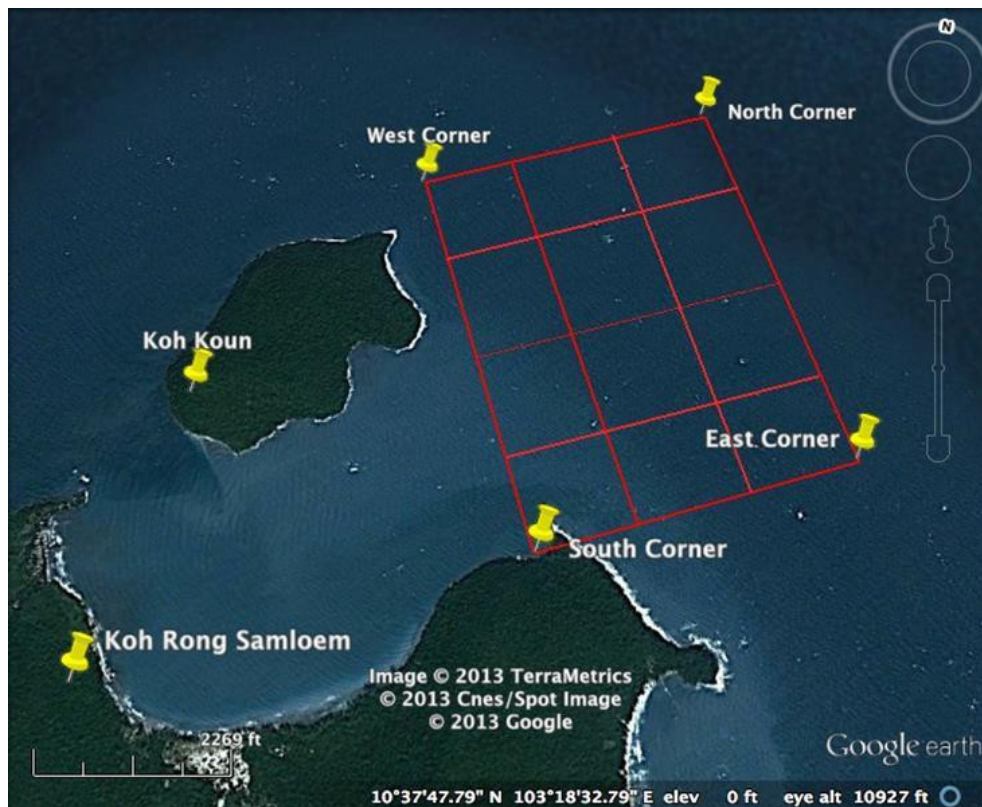


Figure 2. Map of the study area detailing the structure of the grid pattern used for surveying.

Each survey involves laying two parallel 50 metre long lines, spaced 5 metres apart, in a previously determined direction. On each transect line, two divers swim on either side of the line surveying the area 2.5 metres adjacent. The total area surveyed for each transect is 500m<sup>2</sup>.

Seahorse species, trunk, head and snout length, associated habitat and demographic class (pregnant male, male, juvenile, female) were recorded for each seahorse specimen found. Juveniles were defined as any seahorse with a trunk length under 2cm, and were not sexually distinguished due to difficulties in differentiating small individuals without fully developed

sexual and species characteristics. Counts of pencil urchins, soft corals, anemones, sea grass, hydrozoans, sea pens and man-made structures were also recorded.

Data was recorded in Microsoft excel and Microsoft excel was used for data analyses. Standard error of the mean and Student's t-tests were used to test for significance within the data.

## RESULTS

### *Population and Demographic Composition*

Over the course of the fourth quarter (October, November and December 2014), there were 41 seahorse sightings over 91 dives (Figure 3). Females were the most commonly seen cohort with eighteen sightings. Pregnant males and juveniles were the second most abundant cohorts, both with nine total sightings. Non-pregnant males were seen five times over the three month period.

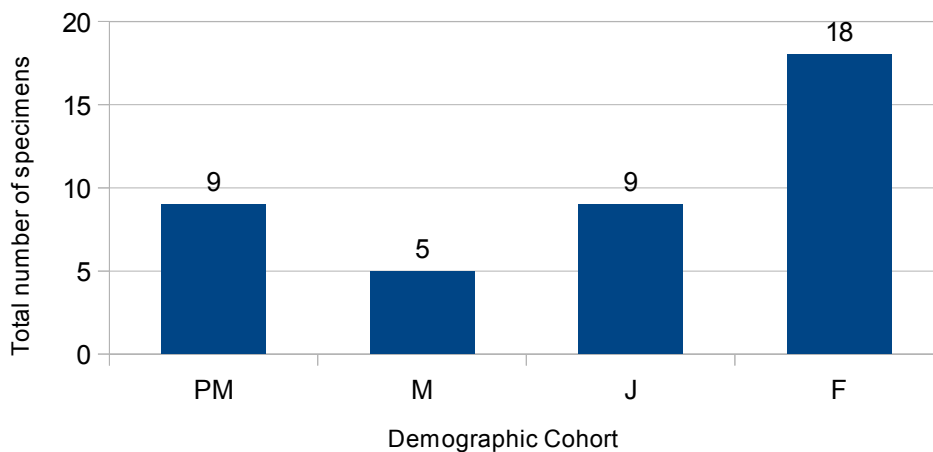


Figure 3. Graph representing the entire observation set in demographic cohorts (PM; Pregnant male, M; non-pregnant male, J; Juvenile, F; Female)

Over the entire fourth quarter, for any single dive, on average, 0.2 females were seen, 0.1 pregnant males and juveniles were seen and 0.05 males were observed (figure 4). There was no significant difference between abundances of any cohort ( $p > 0.05$  for all t-tests).

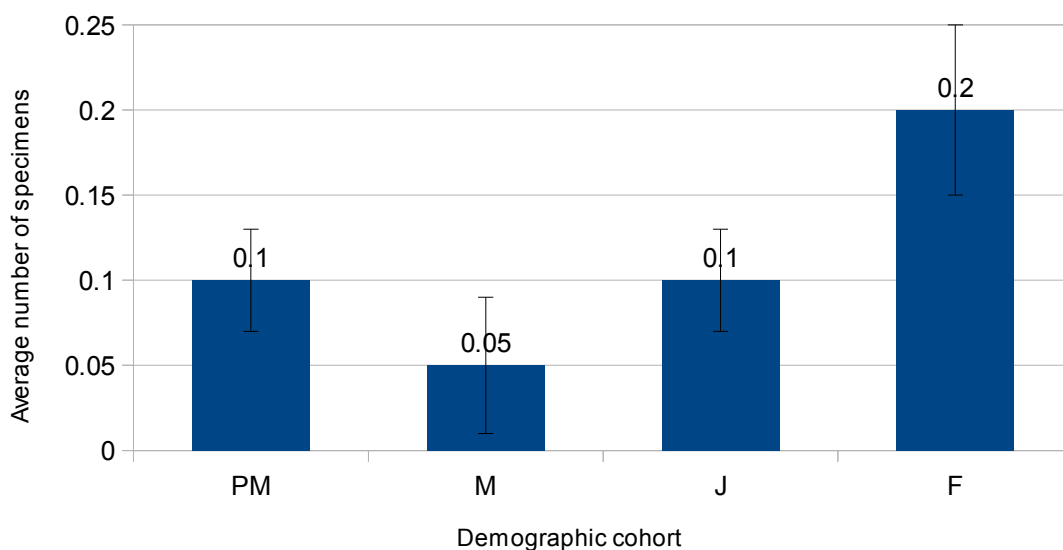


Figure 4. Graph representing each demographic cohort (PM; Pregnant male, M; male, J; Juvenile, F; Female) as a relative proportion of the total observation set per dive (n=41, dives=91).

As shown in figure 5 below, females were the most abundant demographic cohort for the fourth quarter, comprising 44% of the observation set. Pregnant males and juveniles each composed 22%, and males 12%.

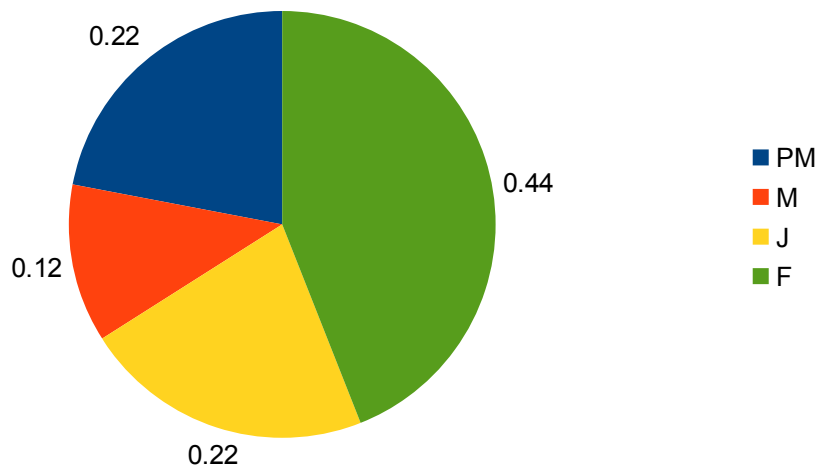


Figure 5. Demographic composition of the fourth quarterly observation set (PM; Pregnant male, M; Male, J; Juvenile, F; Female)

### Holdfast and Habitat Selection

Seahorses were most commonly found to be using pencil urchins as their holdfast (figure 6 below), being used almost four times more frequently than any other holdfast.

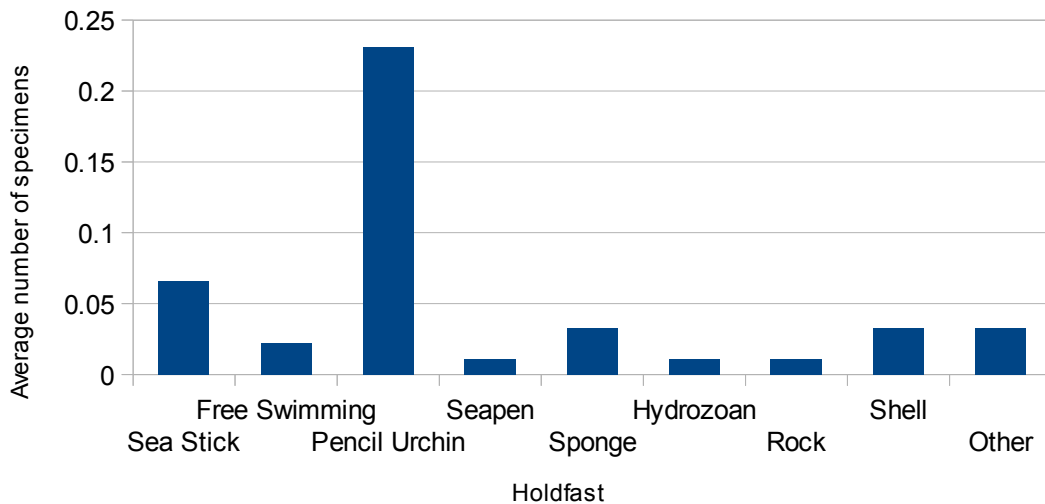


Figure 6. Average number of specimens found on various holdfasts per dive (n=41, dives=91).

Pencil urchins were the most frequently used holdfast for males, juveniles and females (0.07, 0.2 and 0.2 respectively, figure 7 below). Pregnant males occurred on six different holdfasts, males occurred on three, juveniles on two and females on seven.

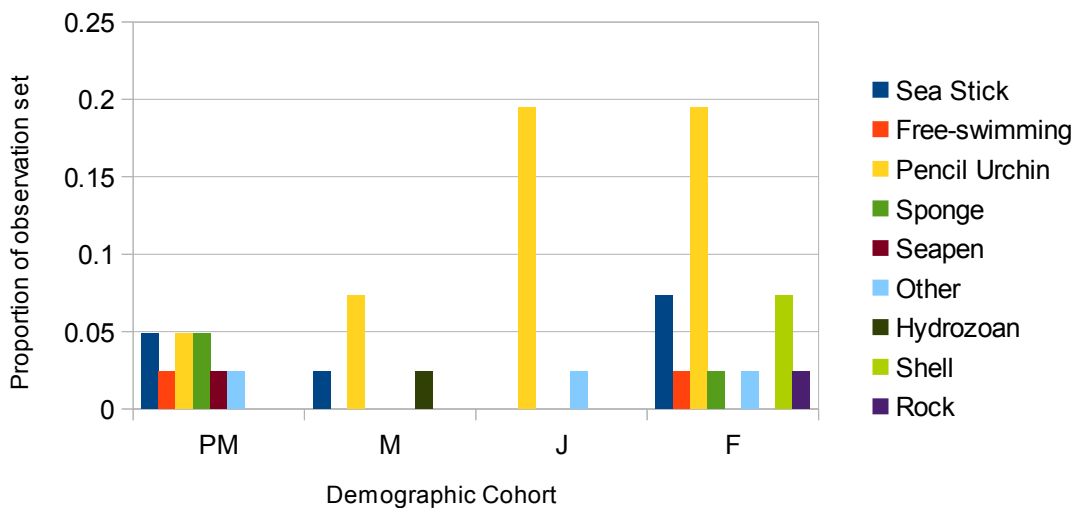


Figure 7. Proportional representation of holdfast selection by demographic cohort (PM; Pregnant male, M; Male, J; Juvenile, F; Female) (n=41, dives=91)

## DISCUSSION

Seahorses (*Hippocampus spp.*) are a particularly charismatic, mystical and unique genus. Similar to the tiger and giant panda for terrestrial conversation, seahorses are useful as a flagship species for the conservation of marine environments (Shokri *et al.* 2008). Over the past two decades, marked efforts by a number of organisations and grass-roots operations have focused on persistent, continuous surveys of seahorse populations ([www.theseahorsetrust.org](http://www.theseahorsetrust.org)). Long-term monitoring of a specific population via unrelenting surveying provides valuable insight into temporal oscillations within that population's abundance, demographic composition and to monitor the effectiveness of any conservative schemes that may be in place (Barrows *et al.* 2009). Marine Conservation Cambodia (MCC) has been monitoring seahorse populations in a single study area, 'The Corral' over the past seventeen months. The current study is the 2013 fourth quarterly assessment of the population, compiling data collected during October, November and December.

Almost exclusively, the current *Hippocampus* composition within The Corral is dominated by a single species, *Hippocampus spinosissimus*. Despite high species diversity at the Corral in 2007, extensive trawling activity destroyed the habitat and populations in the area. Various other species are beginning to return to the area, with recent positive identifications of *H. comes*, *H. kuda* and *H. trimiculatus*, however these have mostly been seen outside of surveys and in very low abundance (Emma Robertson, pers. obs.). As such, the current study focuses on *H. spinosissimus*. Accurate knowledge of a particular species' life-history is important for the planning and implementation of schemes to support population regeneration and long-term persistence in a region (Foster and Vincent 2004). Future papers will, however, examine fluctuations in species diversity and composition on The Corral.

Previous literature cites *H. spinosissimus* as a species inhabiting coral and soft bottom (sand) habitats, normally in depths of less than 30 meters (Foster and Vincent 2004). As the Corral is predominantly sloping sand flats with an average depth of 20 metres between 10-11° latitude, it is a predicted habitat for *H. spinosissimus*. Various life-history stages and strategies may render *H. spinosissimus* less of a specialist than other *Hippocampus* species; they have a yearly breeding season with several pregnancies, a relatively short gestation period of 12-14 days, a planktonic juvenile stage, and have been observed to utilize a relatively diverse selection of holdfasts (Truong and Nga 1995; Nguyen and Do 1996; P. Ferber pers. obs.; Cai *et al.* 1984; S. Morgan unpubl. Data). All of these traits make *H. spinosissimus* more suited than other species to damaged and fragmented habitats, such as The Corral. Population recruitment rates are higher relative to other seahorses, with greater dispersal, rendering them better adapted to re-occupy damaged habitat.

### **Population and demographic composition**

Due to a yearly breeding cycle and short gestation period, it is unlikely that *H. spinosissimus*' reproductive strategy would have any significant effect on the natural temporal demographic composition of the population. The data in the current report shows that females were the most abundant demographic (however this abundance was not significantly greater than any other demographic cohort). This was not so for data from two years ago during the same quarter (November and December 2011), in which juveniles were the most abundant cohort. The data collected in 2011 also yielded far more seahorse sightings, indeed 76 specimens sighted over 32 dives, compared to forty one seahorse sightings over ninety one dives for the

current dataset. As there currently appears to be no correlation between population composition and time of year (i.e. comparison between quarterly datasets from consecutive years do not have the same population characteristics), we can preliminarily conclude that the local *H. spinosissimus* population are indeed exhibiting a yearly breeding cycle resulting in no significant yearly fluctuations in demographic composition.

This is one aspect of *H. spinosissimus*' life-history which renders it more suited to an exploited and damaged habitat. The constant breeding cycle, thus persistent population recruitment, leaves no single time when the population is unproductive. However, the population is still capable of dropping below a viable breeding density, whereby natural mortality (particularly coupled with anthropogenic exploitation) exceeds natural population replenishment, leading to extirpation (Beschta and Ripple 2009). In the last quarterly report (third quarter 2013) there were no non-pregnant males observed. In this fourth quarter, non-pregnant males have been seen, however they were the least abundant cohort (figure 4 and 5 above). This is consistent with other datasets we have analysed, and it appears that non-pregnant males are the least abundant demographic cohort in this population (third quarterly report, 2013).

The current dataset observed an average of 0.45 seahorses per dive. Compared with the same quarter two years ago, when 2.38 seahorses were being seen per dive on average, there appears to be a drastic reduction in the seahorse population. Before any solid conclusions can be drawn, future trends must be analysed. This will enable temporal comparison to identify trends within the population structure and abundance. Nonetheless, based on the current dataset and past data, preliminarily it appears that the seahorse population on the Corral is in decline. Other than the probable influence of destructive anthropogenic activity in the region, a decline in population could be attributed to individuals migrating out of the study area during the far windier months of September, October, November and December, or in response to much greater tidal fluctuations during this time of year. Such migratory behaviour has indeed been observed in *H. guttulatus* and *H. hippocampus* in British Atlantic waters (Garrick-Maidment *et al.* 2014). Although the mechanisms triggering migratory movements are not yet fully understood, temperature, photoperiod and lunar cycling all likely play a role in seasonal habitat switching (Garrick-Maidment 2013). Future analysis will provide more insight into the population oscillations in the current population.

### ***Habitat and habitat selection***

It must be remembered that the study site in the current paper is a damaged and fragmented habitat. The Corral is almost exclusively non-vegetated sand flat, with bottom composition changing only in shell cover. Sponges, sea pens, hydrozoans and soft coral are observed in low densities, rendering The Corral an open water habitat, with sparse distribution of benthic invertebrates and flora. Little is known about the particulars of *H. spinosissimus* habitat preference and holdfast selection, however other *Hippocampus* species, *H. capensis* and *H. hippocampus*, have been found to select open habitats and different species select a plethora of different holdfasts (Bell *et al.* 2003; Foster and Vincent 2004; J. Curtis and A. Vincent, unpubl. data). All *Hippocampus* species possess a prehensile tail, used to grasp holdfasts (Foster and Vincent 2004); however specimens of certain species have been observed far from any object, settled in depressions within the substratum (A. Vincent, pers. obs.). Different holdfasts might be selected for a variety of reasons, from predation avoidance due to camouflaging, maximizing feeding potential via water flow to simple object availability (Bell and Westoby



1986; Bell *et al.* 2003; Choo and Liew 2003). However, the vast majority of holdfasts selected in previous literature are sedentary; seahorses in the current study have been found to significantly select mobile pencil urchins as their holdfast (figure 6 and 7).

As a genus, *Hippocampus* has generally been observed to be territorial and relatively sedentary. This has resulted in monogamous pair-bonding within a single breeding cycle in the majority of studied populations, with the male only accepting eggs from a single female in a breeding cycle (Foster and Vincent 2004). Monogamy serves to increase reproductive success of fishes found in relatively low densities, that have low mobility and that depend on camouflage as a defence against predation (Barlow 1988; Vincent and Sadler 1995). However, a monogamous breeding strategy is associated with one sex being territorial (and therefore sedentary), establishing a breeding ground and home range in which to mate and spawn. However, the seahorse population in the current study is often found on mobile holdfasts. Interestingly, there is no relative shortage of sedentary holdfasts available on The Corral; indeed seahorse individuals are found on sponge, sea pens, shells and other holdfasts (figure 6).

Given the suspected relatively low density of the current study population, adaptation to a moving holdfast might be selected for by countering the effect of a low chance of interaction with another individual (if attached to a sedentary holdfast). In a sparsely populated area, therefore, if both sexes select a mobile holdfast, reproductive potential is maximized by increasing the chance of encountering a mate. Interestingly, the only specimens found to be 'free-swimming' (not attached to anything) were females and pregnant males (figure 7). It is believed that male seahorses instigate mating and attract females via pheromone production (Vincent, n.d., Garrick-Maidment 2014). As such, a free-swimming female could be searching for a male which is releasing mating pheromones in the vicinity. However, we would expect to see a far greater number of free-swimming females if this was indeed a mating mechanism; yet again, continued research will shed more light on this. One method of determining holdfast switching rate (thus inferences on territoriality and mating strategies) would be to use a tagging scheme to pair seahorse individuals with their associated holdfast. This would show how often seahorses in our study population release their holdfast, and risk the strong currents to find a new one. Although beyond the scope of this current quarterly assessment paper, future yearly assessments will examine holdfast selection relative to demographic cohort. This will increase our understanding of mating strategies and territoriality of The Corral seahorse population.

In a genus as diverse as *Hippocampus*, it is likely that populations are capable of adapting to their local habitat, provided environmental factors such as salinity, temperature fluctuations, depth and habitat-associated pathogens remain within the tolerance levels of that particular species. Indeed, such local adaptation has been shown in UK *H. hippocampus* and *H. guttalulatus* species in response to sheltered vs. non-sheltered populations to fluctuating weather conditions (Garrick-Maidment 2013). In these studies, populations of seahorses living in non-sheltered areas of Studland Bay have adapted a migration behaviour to avoid stormy, shallow water. The population inhabiting Poole harbour, directly next to Studland bay, have no need to migrate during the winter as they are sheltered from the storms by their habitat (the harbour).

As such, a population of a species such as *H. spinosissimus* with a relatively general life-history strategy could be expected to adapt to and persist in a disturbed habitat such as The Corral.

We are unable to compare the relative health of the population in the current study with other populations due to insufficient robust data regarding the particular densities of *H. spinosissimus* in other habitats. However, previous literature indicates that seahorses in general have patchy distribution and low densities (Foster and Vincent 2004); given the fragmented habitat and continued fishing pressure on The Corral, it is likely the population in the current study is sparse and relatively scarce. Furthermore, our current inability to assess the density of our study population due to individual recognition (thus re-count) limits our behavioural assessment potential; the potential implementation of individual tagging schemes will make population density assessment possible, giving insight into the mechanisms behind mobile holdfast selection.

The current quarterly assessment only compiles data from October, November and December 2013, during which time forty one seahorses were observed in ninety one survey dives. Although this is an observational indicator as to how sparse and non-abundant our study population is, this sample size is far too small to provide any accurate information regarding population dynamics oscillations and holdfast preference. An examination of our complete dataset will enable a variety of analyses, including comparisons between protected vs. unprotected GPS plots, variation between seasons, and relative holdfast preference between the different demographic cohorts (male, female, pregnant male and juvenile). Long-term studies of this nature are vital for the understanding of populations, thus for the planning of effective conservation.

## CONCLUSION

The current paper continues the on-going research conducted by MCC at Koh Rong Samleom, Cambodia; aiming to monitor, assess and analyse the seahorse population of our single study site. In particular, the study aims to assess changes in the seahorse population over time and the way the population responds to changes in habitat conditions. With each quarter of data collected and analysed, it is hoped that the expanding dataset can explain the changes within the seahorse population in terms of abundance, species diversity, demography, and contribute to hypotheses on breeding and mating patterns.

In this 2013 fourth quarterly report, forty one seahorses were observed over ninety one dives. Data from this quarter continued to support previous hypotheses and observations. *H. spinosissimus* significantly select the Pencil Urchins as their preferred holdfast. Mechanisms behind this behaviour remain uncertain, however this could possibly be an adaptation to a sparse population and a method of dispersal that increases the potential of encountering a suitable mating partner. Traditionally, seahorses have been observed to be territorial and select sedentary holdfasts; perhaps the population on The Corral can not afford to be territorial due to the highly fragmented, poor quality of the habitat, instead selecting mobile holdfasts which increase the chances of inter-individual interaction, thus increasing the chance of finding a mate.

Furthermore, the current study shows that the life-history traits of *H. spinosissimus*, such as short gestation period, yearly breeding cycle with numerous pregnancies and a diverse holdfast selection, renders it the best suited species to adapt to a fragmented habitat, such as The Corral. This explains the relative absence of other seahorse species which had once been observed in the area, however no longer are.

The fact that non-pregnant males were the least abundant cohort, females were significantly the most abundant and juveniles were present supports the observation that there is a yearly breeding cycle, perhaps with females being the sex who need to compete for mating opportunities. Further data collection and analysis is needed in order to determine actual seasonal oscillations in population demographics before any targeted speculations can be made to attempt to explain this. Indeed, previous reports shows no significant fluctuation in population dynamics throughout the year; why are females the most abundant cohort? Future reports will examine operational sex ratio and sex biases in populations which lead to certain mating strategies.

The datasets collected over a single quarter are often quite small. Indeed, this report is based on forty one sightings over three months, making it difficult to draw definitive conclusions. This is why it is imperative to have continuous surveying of any single population. It will be the analysis of an entire year of data, and then comparison between years, that will provide solid, reliable data, allowing for temporal analyses revealing any breeding patterns, local behavioural adaptations and any yearly oscillations in population demographics. This project, Marine Conservation Cambodia, is part of a developing global co-operation between a number of different seahorse research projects. Other surveying projects are being carried out in the United Kingdom, Malta and Malaysia. By using a standardised database and persistent surveying, our knowledge of this splendidly unique creature's ecology, status and conservation methods can continue to increase. This is now more important than ever, due to increasing economic demand, particularly from the traditional chinese medicine trade. With

knowledge, we can attempt to protect seahorses and their diverse associated habitats world-wide, and by extension, contribute towards global marine conservation efforts.

## REFERENCES

- Barrows, A., Martin-Smith, K. & Baine, M. (2009). 2009. *Journal of Fish Biology*, 74, 806-819.
- Bell, E., Lockyear, J., McPherson, J., Marsden, A. & Vincent, A. (2003). The first field studies of an endangered South African seahorse, *Hippocampus capensis*. *Environmental Biology of Fishes*, 67, 35-46.
- Bell, J. & Westoby, M. (1986). Variation in seagrass height and density over a wide spatial scale: effects on common fish and decapods. *Journal of Experimental Marine Biology and Ecology*, 104, 275-295.
- Beschta, R. & Ripple, K. (2009). Large predators and trophic cascades in terrestrial ecosystems of the western United States. *Biological Conservation*.
- Bologna, P. A. (2007). Impact of differential predation potential on eelgrass (*Zostera marina*) faunal community structure. *Aquatic Ecology*, 41, 221-229.
- Cai, N., Xu, Q., Yu, F., Wu, X. & Sun, G. (1984). Development of embryo of *Hippocampus trimaculatus*. *Studia Marina Sinica*, 23, 95-104.
- Caro, T., & O'Doherty, G. (1999). On the use of surrogate species in conservation biology. *Conservation Biology*, 13:805-814.
- Choo, C., & Liew, H. (2003). Spatial distribution, substrate assemblages and size composition of seahorses (Family Syngnathidae) in the coastal waters of Peninsular Malaysia. *Journal of Marine Biology Association U.K.*, 83, 271-276.
- Courchamp, F., Angulo, E., Rivalan, P., Hall, R., Signoret, L., Bull, L., *et al.* (2006). Rarity value and species extinction: the anthropogenic Allee effect. *PLoS Biology*, 45, 1033-1044.
- Doyle, K. n.d. The Seahorse Dilemma. *Save Our Seahorses*. Retrieved February 13, 2014, from <http://www.saveourseahorses.org/the-seahorse-dilemma.php>.
- Duarte, C. (2002). The future of seagrass meadows. *Environmental Conservation*, 29(02), 192-206.
- Foster, S. & Vincent, A. (2004). Enhancing sustainability on the international trade in seahorses with a single minimum size limit. *Conservation Biology*, 1044-1050.
- Foster, S. & Vincent, A. (2004). Life history and ecology of seahorses: implications for conservation and management. *Journal of Fish Biology*, 65: 1-61.
- Garrick-Maidment, N. (2013). Temperature and day length related seasonal movement of seahorses at South Beach in Studland Bay in Dorset. *The Seahorse Trust*.
- Garrick-Maidment, N., Durant, E. & Newman, J. (2014). Year 5 report on the Seahorse Tagging Project at South Beach, Studland Bay in Dorset run by The Seahorse Trust. *The Seahorse Trust*.
- Gell, F. & Roberts, C. (2002). *The fishery effects of marine reserves and fishery closures*.

Washington D.C.: WWF-US.

Hutchings, J. & Reynolds, J. (2004). Marine fish population collapses: consequences for recovery and extinction risk. *Bioscience*, 54, 297-309.

Huxley, T. (1883). Inaugural address. *International Fisheries Exhibition Literature*, 4, 1-19.

Jackson, J., Kirby, M., Berger, W., Bjorndal, K., Botsford, L., Bourque, B. *et al.* (2001). Historical overfishing and the recent collapse of coastal ecosystems. *Science*, 298, 629-638.

Keller, G. & Kenchington, R. (1992). Guidelines for establishing protected marine areas: A marine conservation and development report. *IUCN*, (p. +79). Gland, Switzerland.

Leslie, H. (2005). A synthesis of marine conservation planning approaches. *Conservation Biology*, 19, 1701-1713.

McPherson, J. & Vincent, A. (2004). Assessing East African trade in seahorse species as a basis for conservation under international controls. *Aquatic Conservation: Marine and Freshwater Ecosystems*, 14, 521-538.

Meeuwig, J., Do, H., Truong, S., Job, S., & Vincent, A. (2006). Quantifying non-target seahorse fisheries in central Vietnam. *Fisheries Research*, 81, 149-157.

Nguyen, V. & Do, H. (1996). Biological parameters of two exploited seahorse species in a Vietnamese fishery. *Proceedings of the 1st International Conference in Marine Conservation*, Hong Kong.

O'Donnell, K., Pajaro, M. & Vincent, A. (2010). How does the accuracy of fisher knowledge affect seahorse conservation status? *Animal Conservation*, 13, 526-533.

Pajaro, M., Vincent, A., Buhat, D., & Perante, N. (1998). The role of seahorse fishers in conservation and management. *Proceedings of the First International Symposium Marine Conservation* (pp. 118-126). Chicago: Hong Kong Marine Conservation Society.

Rosa, I., Oliveria, T., Castro, A., Moraes, L., Xavier, J., Nottingham, M., *et al.* (2007). Population characteristics, space use and habitat associations of the seahorse *Hippocampus reidi* (Teleostei: Syngnathidae). *Neotropical Ichthyology*, 5, 405-414.

Rosa, I., Sampaio, C. & Barros, A. (2006). Collaborative monitoring of the ornamental trade of seahorses and pipefishes (Teleostei: Syngnathidae) in Brazil: Bahia State as a case study. *Neotropical Ichthyology*, 4, 247-252.

Shokri, M. R., Gladstone, W. & Jelbart, J. (2008). The effectiveness of seahorses and pipefish (Pisces: Syngnathidae) as a flagship group to evaluate the conservation value of estuarine seagrass beds. *Aquatic Conservation: Marine and Freshwater Ecosystems*, 19:588-595.

Spalding, M., Fish, L. & Wood, L. (2008). Toward representative protection of the world's coasts and oceans-progress, gaps, and opportunities. *Conservation Letters*, 1(5), 217-226.

Tipton, K. & Bell, S. (1988). Foraging patterns of two syngnathid fishes: importance of harpacticoid

copepods. *Marine Ecology Progress Series*, 47, 807-815.

Truong, S. & Nga, T. (1995). Reproduction of two species seahorses *Hippocampus histrix* and *H. trimaculatus* in Binhthuan waters. . *Bao Cao Khoa Hoc*, 27, 68.

Valiela, I., Bowen, J., & York, J. (2001). Mangrove fires: One of the world's threatened major tropical environments. *BioScience*, 51(10), 807-815.

Vincent, A. (1996). *The International Trade in Seahorses*. International: TRAFFIC.

Vincent, A., Foster, S. & Koldewey, H. (2011). Conservation and management of seahorses and other Syngnathidae. *Journal of Fish Biology*, (78), 1681-1724.

Worm, B., Barbier, E., Beaumont, N., Duffy, J., Folke, C., Halpern, B., *et al.* (2006). Impacts of biodiversity loss on ocean ecosystem services. *Science*, 314, 787-790.